

Licence Number: 5103

Licensee: G C Schmidt Pty Ltd

Address of premises: Monaro Basalt Quarries
Monaro Highway
NIMMITABEL NSW 2631

EPA's Public Register: <https://www.epa.nsw.gov.au/licensing-and-regulation/public-registers>

Air monitoring requirements:

POINT 1:

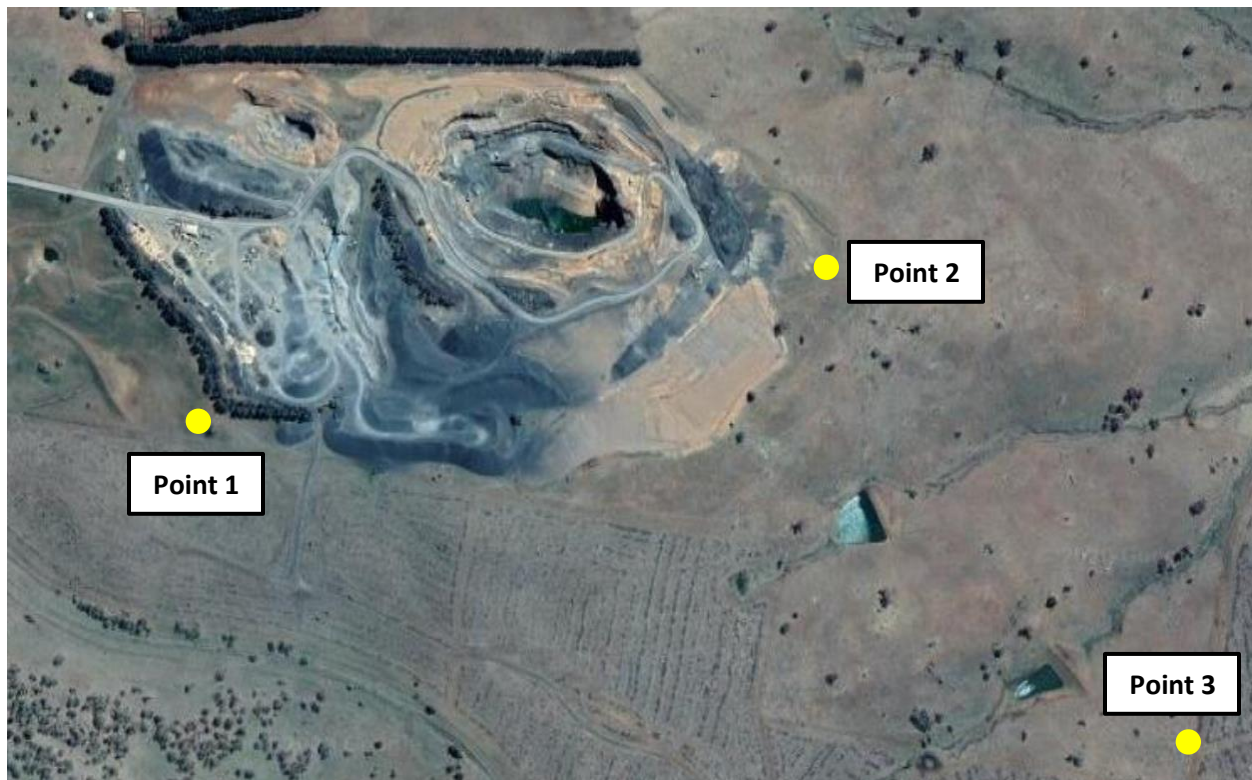
Pollutant	Units of measure	Frequency	Sampling Method
Insoluble solids	Grams per square metre per month	Monthly	AM-19

POINT 2:

Pollutant	Units of measure	Frequency	Sampling Method
Insoluble solids	Grams per square metre per month	Monthly	AM-19

POINT 3:

Pollutant	Units of measure	Frequency	Sampling Method
Insoluble solids	Grams per square metre per month	Monthly	AM-19



Nimmitabel Dust Sampling Results

	g/m2/month Site 1	g/m2/month Site 2	mg Site 3				g/m2/month Site 3			
			East	North	South	West	East	North	South	West
July										
Aug	3.00	5.80	46.00	60.00	73.00	20.00	1.10	1.50	1.80	0.50
Sept										
Oct	1.90	3.00	46.00	35.00	104.00	50.00	1.50	1.20	3.50	1.70
Nov										
Dec	3.80	4.30	99.00	85.00	218.00	101.00	2.50	2.10	5.40	2.50
Jan										
Feb										
Mar										
April										
May										
June										
July										
2021										
Max	3.80	5.80	99.00	85.00	218.00	101.00	2.50	2.10	5.40	2.50
Ave	2.90	4.37	63.67	60.00	131.67	57.00	1.70	1.60	3.57	1.57
Min	1.90	3.00	46.00	35.00	73.00	20.00	1.10	1.20	1.80	0.50
2020										
Max	3.00	10.50	946.00	328.00	1080.00	2060.00	-	-	-	-
Ave	2.20	5.50	214.20	88.80	586.00	381.30	-	-	-	-
Min	1.10	1.30	37.00	21.00	59.00	20.00	-	-	-	-
2019										
Max	10.40	40.00	138.00	106.00	621.00	144.00	-	-	-	-
Ave	4.00	7.30	42.60	37.10	167.30	46.20	-	-	-	-
Min	0.70	1.40	16.00	8.00	42.00	9.00	-	-	-	-
2018										
Max	14.70	9.70	51.00	41.00	50.00	227.00	-	-	-	-
Ave	4.10	4.10	32.10	23.50	33.90	113.80	-	-	-	-
Min	0.20	1.00	20.00	10.00	11.00	15.00	-	-	-	-
2017										
Max	6.00	5.10	80.00	53.00	79.00	185.00	-	-	-	-
Ave	3.25	3.34	42.63	29.38	40.75	96.43	-	-	-	-
Min	1.10	0.60	7.00	5.00	6.00	14.00	-	-	-	-